

Hino's Standard 80,000 PSI frame is among the strongest in the industry, but we also offer an optional 120,000 PSI frame (L7 only) to maintain integrity in the most rugged applications.



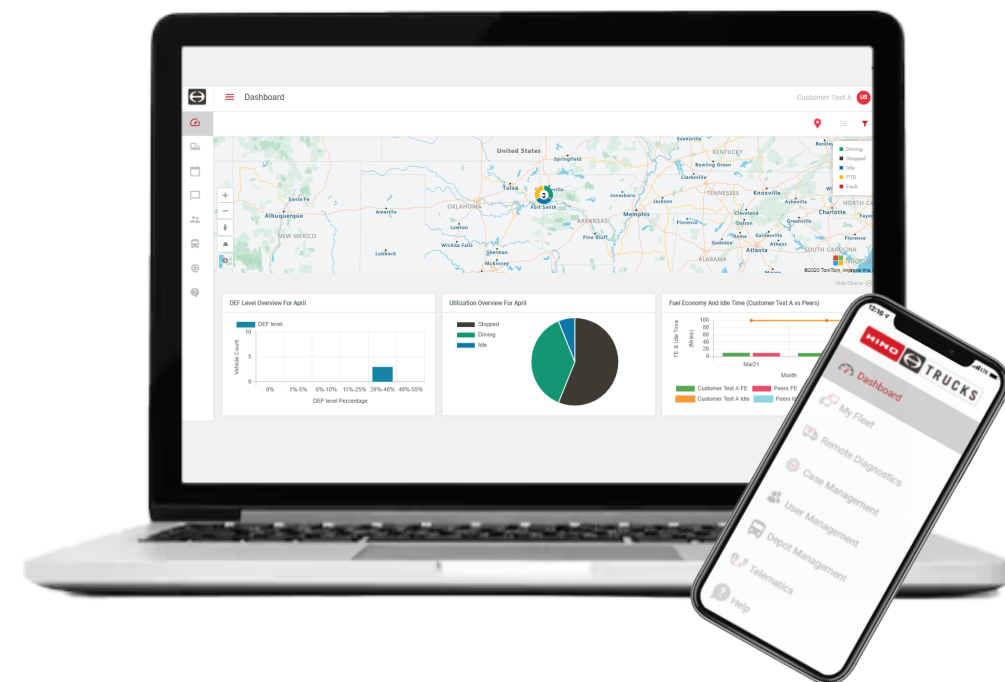
Yes, we do the little things like extra-wide door openings, large step surfaces and grab handles to keep drivers safe, but in today's world, that's not enough. With the Hino Active Safety Suite, drivers are safer with the integration of today's cutting edge camera and radar technologies.



Driver retention is tough. Bluetooth Radio w/CD player, Air ride drivers seat, USB charging port, A/C, cruise control, tilt & telescopic steering wheel, will help. That's why its STANDARD.



Part of what makes the Hino L Series great for so many applications is maneuverability & visibility. 55 degree wheel cut is perfect for tight spots in the inner city and a 2,385 sq/in windshield helps drivers see through their work day.



## INTRODUCING YOUR CONNECTIVE... **EDGE.**

Gain a competitive Edge with 5 years of access to the Ultimate customer portal and mobile app that delivers vehicle location tracking, a live fleet performance dashboard, vehicle health monitoring including real time fault notifications, streamlined service experience with case

communication, remote update capability maximizing uptime and the flexibility to add-on a 3rd party advanced telematics service from one of Hino Trucks preferred partners and eliminate the need to purchase additional hardware.\*

\*Exceptions may apply. Remote updates are limited to eligible vehicles.



# TRUCKS

A **Toyota** Group Company

# POWER**ON.**

The Hino conventional models have been the fastest growing medium duty trucks for years. It started with great aerodynamics, functionality and durability, and has continued with leading edge connectivity. The great just got better. The Hino L Series sports an all-new automotive grade interior, a host of new advanced safety equipment, and larger cab configurations for more versatility than ever before.

Available in day, extended and crew cab configurations, Hino L Series trucks are ideal for applications ranging from 23,000 lbs. to 33,000 lbs. GVWR. Factoring in the industry's leading support of HinoWatch and available HinoCare and it's easy to see why Hino is the fastest growing medium duty truck brand in the U.S.A. - POWER ON.

**GABRIELLI**  
**TRUCK SALES**  
[gabriellitruck.com](http://gabriellitruck.com)

HSS\_LSERIES\_1221



A **Toyota** Group Company

# 2023

## L | SERIES

**HINO**





## ULTIMATE OWNERSHIP EXPERIENCE

### OUR COMMITMENT

When you make the decision to go Hino, its about more than just a truck.



### HINOWATCH - STANDARD

24/7 Roadside Assistance is standard for 3 years on all Hino trucks - unlimited mileage. HINOWATCH includes lockout, out of fuel, battery jumpstart and warranty towing.



### HINOCARE - AVAILABLE

Preventive maintenance saves money and increases uptime across your entire fleet. HINOCARE multi-year programs mean you can match your needs with your long term goals for cost management.



5 YEAR WARRANTY

### 5 YEAR TRANSMISSION WARRANTY - STANDARD

Only Hino provides a 5-year, unlimited mile Allison transmission warranty... **STANDARD.**



Standard with a 3 year unlimited mile CUMMINS engine warranty with the option to max assurance at 7 years or 300,000 miles.

## L SERIES - SPECIFICATIONS

### ENGINE/DRIVETRAIN/AXLE

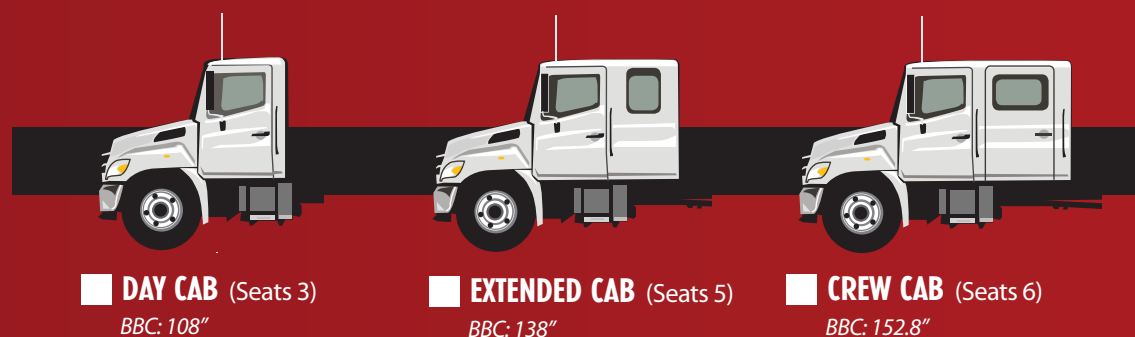
Engine model	Cummins B6.7L (EPA 2021 certified)
Type	Diesel 4 cycle, 6 cylinder in-line, water-cooled, parent bore cylinder
Turbocharger	Variable Geometry Turbocharger w/integrated engine braking
Fuel System	Bosch Common rail, direct injection
Bore & Stroke	4.21 in. x 4.88 in.
Max. output @ 2,500 rpm	240-260hp
Max. torque @ 1,500 rpm	560-660 lb.-ft.
Emissions system	EGR with Single Module Aftertreatment
Transmission	Allison six speed automatic with neutral at stop (NAS)
Driveline	Dana Spicer HD
Front axle	Meritor MFS series reverse Elliot, "I" beam (oil lubricated)
Rear axle	Meritor, full floating, single reduction, single-speed, hypoid gearing

### ELECTRICAL EQUIPMENT

Batteries	<input type="checkbox"/> STD Two, parallel connection, 1200 CCA (GR 31) <input type="checkbox"/> OPT Multiple two battery choices <input type="checkbox"/> OPT Multiple three battery choices
Alternator	<input type="checkbox"/> STD 12V, 130A, Delco (brush) <input type="checkbox"/> OPT 12V, 135A (brushless) <input type="checkbox"/> OPT 160A (brush) <input type="checkbox"/> OPT 200A (brush)
Starter	Delco Remy 31MT 12V, 4.8kw

### TANKS

Fuel Tank	<input type="checkbox"/> STD 50 gallon <input type="checkbox"/> OPT Dual 50 gal. <input type="checkbox"/> OPT Single 70 gal. <input type="checkbox"/> OPT Single 90 gal.
DEF tank	7.4 gallon



Wheelbase (in.)	<input type="checkbox"/>	<input type="checkbox"/>	<input type="checkbox"/>	<input type="checkbox"/>	<input type="checkbox"/>	<input type="checkbox"/>	<input type="checkbox"/>	<input type="checkbox"/>	<input type="checkbox"/>	<input type="checkbox"/>	<input type="checkbox"/>
	152	175	187	205	212	217	235	242	253	271	301
Cab to axle (in.)	Day	84.6	107.6	119.6	137.6	144.6	149.6	167.6	185.6	203.6	233.6
	Extended								144.6	155.6	203.6
	Crew								140.8		

## L6 GVWR: 23,000-25,950 LBS.

### WEIGHT CAPACITIES

Front axle range: 8,000-12,000 lbs. Rear axle range: 17,500-19,000 lbs.

Engine HP	<input type="checkbox"/> Cummins B6.7L 240hp <input type="checkbox"/> Cummins B6.7L 260hp
Transmission model	<input type="checkbox"/> STD 2200HS <input type="checkbox"/> STD 2200RDS <input type="checkbox"/> OPT 2500HS <input type="checkbox"/> OPT 2500RDS
Brakes	<input type="checkbox"/> STD Hydraulic disc <input type="checkbox"/> OPT Air S-Cam drum
Front axle/susp. lbs.	<input type="checkbox"/> STD 8,000 <input type="checkbox"/> OPT 10,000/12,000
Rear susp. type	<input type="checkbox"/> STD Multi leaf spring <input type="checkbox"/> OPT Hendrickson Comfort Air with electric dump valves
Rear axle/susp. lbs.	<input type="checkbox"/> STD 17,500/19,000 <input type="checkbox"/> OPT 19,000/19,000
Rear axle ratio	<input type="checkbox"/> STD- 5.29 (23k GVWR) <input type="checkbox"/> STD 5.57 (26k GVWR) <input type="checkbox"/> STD 4.11 (25.5k GVWR)
Wheel size	<input type="checkbox"/> STD 22.5" <input type="checkbox"/> OPT 19.5"
Wheel type	<input type="checkbox"/> STD Powder coated white <input type="checkbox"/> OPT Aluminum Accuride or Alcoa
Frame yield strength	80K PSI (1.0 M RBM)

## L7 GVWR: 33,000 LBS.

### WEIGHT CAPACITIES

Front axle range: 10,000-14,000 lbs. Rear axle range: 21,000-23,000 lbs.

Engine HP	Cummins B6.7L 260hp
Transmission model	<input type="checkbox"/> STD 2500RDS <input type="checkbox"/> OPT 2500HS <input type="checkbox"/> OPT 3000RDS <input type="checkbox"/> OPT 3500RDS
Brakes	Air S-cam drum
Front axle/susp. lbs.	<input type="checkbox"/> STD 12,000 <input type="checkbox"/> OPT 10,000 <input type="checkbox"/> OPT 13,200 <input type="checkbox"/> OPT 14,000
Rear axle/susp. lbs.	<input type="checkbox"/> STD 21,000 <input type="checkbox"/> OPT 23,000
Rear axle ratio	<input type="checkbox"/> STD 5.57 (33k GVWR)
Rear suspension	<input type="checkbox"/> STD Multi leaf spring <input type="checkbox"/> OPT Hendrickson Comfort Air <input type="checkbox"/> OPT Hendrickson 23K Severe Duty Air (23K axle only) <input type="checkbox"/> with electric dump valves
Wheel type (22.5")	<input type="checkbox"/> STD Powder coated white <input type="checkbox"/> OPT Aluminum Accuride or Alcoa
Frame yield strength	<input type="checkbox"/> STD 80K PSI (1.0 M RBM) <input type="checkbox"/> OPT 120K PSI (1.9M RBM)



## L SERIES POPULAR OPTIONAL EQUIPMENT

<input type="checkbox"/> Allison FuelSense Plus / Max
<input type="checkbox"/> Anti-siphon device insert in fuel tank
<input type="checkbox"/> Back-up alarm
<input type="checkbox"/> Cab paint, exterior - custom (factory)
<input type="checkbox"/> Engine idle shutdown
<input type="checkbox"/> Exhaust system - vertical stack type
<input type="checkbox"/> Mirrors, fender mounted-chrome (both sides or passenger only)
<input type="checkbox"/> Mirrors, outside rearview-chrome
<input type="checkbox"/> Mirrors-power heated (available in chrome)
<input type="checkbox"/> Power windows and door locks (available with keyless entry)
<input type="checkbox"/> Programmable speed limit 65,70 mph
<input type="checkbox"/> Rear helper spring-sub leaf type
<input type="checkbox"/> Stabilizer bar, rear (leaf suspension only)
<input type="checkbox"/> Trailer brake package
<input type="checkbox"/> Battery disconnect & jump start station
<input type="checkbox"/> Rear axle ratio • L6 - 5.13, 5.29, 4.33, 4.63, 4.88* • L7 - 4.88, 5.29, 5.86, 6.14*

☐ Full LED Headlights including high/low beams, daytime running and indicator lights



☐ Hino Active Safety Suite



WABCO OnGuardACTIVE™ Collision Mitigation with Adaptive Cruise Control and Electronic Stability Control



WABCO OnLaneALERT™ Lane Departure Warning System

Not all equipment combinations are compatible. For compatibility, additional options and specifications please visit your local Authorized Hino Trucks Dealer. Are you a body company? Additional information @ hinobodybuilder.com

\* Available on select GVWR ++All features and options are subject to change without notice. ++For more model specifications, contact your local Hino dealer.